

DieTronic
lubrication technology

User manual

Motorized air blower

Dietronic s.r.l. – lubricating technology

Via Madre Teresa di Calcutta, 9/13 – Z.I. Malpensata

26866 Sant'Angelo Lodigiano (LO) - Italia

Tel +39 0371 210129

Fax +39 0371 214321

info@dietronic.eu

www.dietronic.eu

INDEX

1. GENERAL INFORMATION	3
1.1 CAUTION.....	3
1.2 WARRANTY AND SUPPLY	3
1.3 EXCLUSIONS FROM PROVISION.....	3
1.4 THE DOCUMENT AND RECIPIENTS	4
1.4.1 CHARACTERISTICS OF PERSONNEL	4
1.4.2 PURPOSE AND STRUCTURE OF THE DOCUMENT	4
1.5 REFERENCE STANDARDS.....	5
1.6 SYMBOLS AND SIGN	5
1.7 FIELD OF APPLICATION	6
2. SAFETY EQUIPMENT AND SAFETY	6
2.1 GENERAL CONDITIONS.....	6
2.2 ZONES AND RISK OPERATIONS	7
2.2.1 TERMS AND ENVIRONMENTAL RISKS.....	7
2.2.2 SAFETY DEVICES AND SIGNAGE	8
2.2.3 THERMAL DANGER.....	8
2.2.4 STAFF CLOTHING	8
2.2.5 MAINTENANCE REQUIREMENTS.....	8
2.3 WORK ENVIRONMENT	9
2.3.1 INSTALLATION	9
2.3.2 MACHINE IN MOTION.....	9
2.3.3 MACHINE STOPPED OR TURNED OFF	9
2.3.4 LIGHTING OF THE WORK ENVIRONMENT.....	9
2.3.5 NOISE.....	9
3. CHARACTERISTICS	10
3.1 GENERAL CONDITIONS.....	10
3.1.1 MACHINE IDENTIFICATION AND BUILDER	10
3.1.2 REQUEST FOR INTERVENTION AND ASSISTANCE	10
3.1.3 SAFETY REQUIREMENTS.....	10
4. FUNCTION OF OPERATOR PANEL	12

1. GENERAL INFORMATION

1.1 CAUTION

This manual should be considered as an integral part of the machine and should always be available to people interacting with machine itself; the manual should always accompany the machine, even if transferred to another user. Operators are required to read this manual thoroughly and carefully follow the instructions therein, as the DieTronic Ltd. not responsible for damage to persons and / or property, or suffered by the machine, if not to the conditions described below.



The customer has the obligation to respect trade secrets, whereby the following documents and its attachments can't be altered or modified, reproduced or disclosed to third parties, without the authorization of DieTronic Ltd.

1.2 WARRANTY AND SUPPLY

The Dietronic s.r.l. declare that the machine complies with the provisions of law in force in the countries of the European Economic Community and releases the attached DECLARATION OF CONFORMITY.

The Dietronic s.r.l. will repair at its premises any manufacturing defects that occur within 24 months from the delivery of the machine. The warranty becomes void if the replacement free of charge at the manufacturer's factory. The components replaced as a warranty do not extend the warranty period.

In no event shall Dietronic s.r.l. be held responsible for failure to production.



1.3 EXCLUSIONS FROM PROVISION

The Dietronic s.r.l disclaims any liability for failure to comply with the rules for proper installation and is not responsible for the systems upstream or downstream of the machine which it provides.

The Dietronic s.r.l. is only responsible for defects resulting from normal use of the machine.

Excluded are those parts for which there is a normal consumption.

The Dietronic s.r.l. is not liable for defects or malfunctions arising: from the improper use of the machine by the use of lubricants, detergents or other unsuitable products, alterations due to transport or to particular environmental conditions, failure or improper maintenance; tampering or makeshift repairs; unqualified individuals or accessory products not related to the car.

The Dietronic s.r.l. not responsible for disposal of the machine components or products required for use.

The explosion-proof equipment to special conditions of flammability is provided only at the specific request of the customer (see contract). Normally the machine is not equipped to work in environments with volatile substances - explosive.

The Customer is obliged to use only original spare parts and install them according to the intended use.

The responsibilities arising from commercial components are de-linked to the respective manufacturers.



1.4 THE DOCUMENT AND RECIPIENTS

1.4.1 Characteristics of personnel

This document is intended for several people to experience or qualifications who can work in accordance with the most common safety standards.



The Customer must ensure that the operator has the ability and training necessary for its task.

The reading of this manual is mandatory for all professionals interacting with the machine, they must also be informed of the RESIDUAL RISKS arising from the use of the machine or product that is.

The manual can NOT make up for the shortcomings of the various cultural and intellectual professionals interacting with the machine.

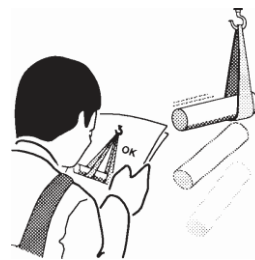


The Customer is liable for all damages caused or suffered by the staff that he has authorized the use of the machine.



is forbidden to use the machine by people unable or who use alcohol, drugs and/or drugs

The staff that interacts with the machine must always use personal protective equipment, headphones, shoes, leather gloves, etc....



1.4.2 Purpose and structure of the document

The original language in which the document has been drawn up is the ITALIAN, so in the event of any inconsistency or doubt seek the original document or further clarification from the manufacturer.



The instructions given in this manual does not replace the safety and technical data for installation and operation, applied directly to the product, nor the rules dictated by common sense, and securities regulations in the country of installation

If, for any reason, at installation and/or commissioning of the plant was carried out is NOT a training training, the Customer is obliged to request it and/or otherwise to ensure that all the conditions described in this document.

1.5 REFERENCE STANDARDS

This chapter shows International standards and national laws respected in the design and construction of the machine.

- Presidential Decree 547 (27 April 1955) Regulations for the prevention of accidents at work;
- 98/37 EC delivers with Presidential Decree 459 (24 July 1996) implementation of Directives 89/392/EEC, 91/368/EEC, 93/44/EEC and 93/68/EEC for CE marking;
- D. Decree 626 (18 September 1994) Implementation of directives for improving the safety and health of workers at the workplace;
- EN 292-1 (November 1992) Safety of machinery - Basic concepts, general principles for design. Part 1: Basic terminology, methodology. (Harmonized).
- EN 292-2 (November 1992) Safety of machinery - Basic concepts, general principles for design. Part 2: Technical principles and specifications. (Harmonized).
- EN 1050 (November 1998) Safety of machinery - Principles for risk assessment. (Harmonized).
- EN 418 (June 1994) Safety of machinery - Emergency stop device. Functional aspects, design principles. (Nor- but harmonized).
- EN 60204-1 (June 1998) Safety of machinery - Electrical equipment of machines Equipment. Part 1: General requirements. (Harmonized standard).
- EN ISO 11202 (October 1997) Acoustics - Noise emitted by machines and equipment. Measurement of emission sound pressure levels at the workplace and in other specified positions - Survey method in situ. (Harmonized).
- EN 60529 (June 1997) Degrees of protection provided by enclosures (Code IP).
- 89/336/EEC (May 1989) Electromagnetic compatibility
- 73/23/EEC Low Voltage Directive implemented by Law 791/77 update by Legislative Decree no. 277/97.
- IEC 446 (1989) Identification of insulated and bare conductors by colours.
- UNI 10893 Technical product documentation - instructions for use.
- UNI - ISO 10015 guidelines for training.
- ISO 7000 and DIN 30600 symbols and graphic signs for the identification of the functions.



1.6 SYMBOLS AND SIGN

On the manual and / or in some cases on the machine, the danger zones are indicated by signs, labels, symbols or icons that represent a risk or obligation. For example, the obligation to consult the manual, which must be available for future use and must not be in any way impaired.

Transactions or situations in which the employees involved must be very careful. General Warning Hazardous voltage.



Operations that require the use of employees qualified and authorized.



Danger caused by electromagnetic interference



Zone temperature: indicates the presence of the presence of heated areas or who have parts with high temperature (danger of burns).

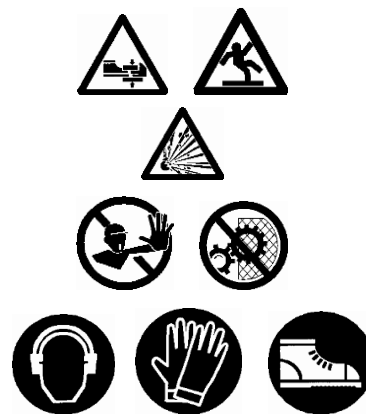


Crushing, cuts or lacerations, slips: Indicates danger zones that could cause injury to the operator.

Explosions: indicates a potential risk of explosion or the need to apply for a possible explosion-proof equipment.

General prohibition: it indicates the prohibition of access to the area examined the prohibition of the operation or the prohibition of removing the covers.

Obligation: mentions the obligation to perform the operations described by using the clothing and / or personal protective equipment put at the disposal of the employer (boots, leather gloves, safety shoes, etc.....).



1.7 FIELD OF APPLICATION

The DieTronic srl disclaims all liability for damages of any kind that may result from incorrect operation, or imprudent. The machine MUST NOT be used by inexperienced or experienced but who performs operations on the machine is not in agreement with those described in this manual and in the attached documentation.



Is forbidden to use the machine for any use not conforming to that provided in the field of employment



2. SAFETY EQUIPMENT AND SAFETY

2.1 GENERAL CONDITIONS

The machine has been built to the highest standards and equipped accident prevention safety devices suitable for the protection of components and operators.

For obvious reasons it is not possible to predict the multitude of installations and environments in which the machine is to be installed so it is necessary that the customer properly inform the manufacturer of the particular conditions of installation.

The Dietronic s.r.l. disclaims any liability for failure to comply with the rules for proper installation and is not responsible for the systems upstream or downstream of the machine which it provides.

The instructions given in this manual does not replace the provisions of safety and technical data for the installation and operation applied directly to the product, nor the safety regulations applicable in the country of installation and the rules dictated by common sense.



It is essential to provide proper information to the operators.

It is therefore imperative that they read and comply with the technical information in this manual and in the attached documentation.

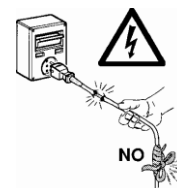
The handling and / or lifting of parts or equipment of high weight (over 30 lbs) must be made via suitable lifting equipment.



Refrain from using the machine if you find any malfunction.

Avoid temporary repairs, repairs should only be performed with original spare parts, which must be installed according to the intended use.

The responsibilities arising from commercial components are assumed by the respective manufacturers.



2.2 ZONES AND RISK OPERATIONS

2.2.1 Terms and environmental risks

The machine must not be installed outdoors or in adverse environmental conditions (sun, rain, snow, wind, too hot or too cold).



Also, make sure the absence of any electromagnetic interference that could alter the data to electronic equipment.



The series machine is not equipped to work in environments with special conditions of flammability or explosive

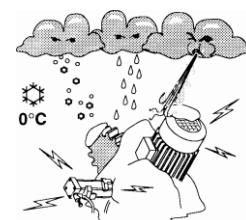
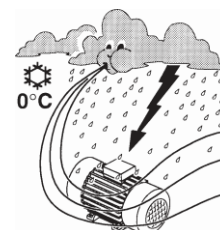
The Dietronic s.r.l. NOT liable for any products used for the use of the machine.

The Dietronic s.r.l. not responsible for disposal of the materials needed to use the machine or production: lubricating oil or emulsified oil, batteries, filters, etc. ... so it is necessary that the customer Provide personally, depending on the rules in force in the country of installation, disposal of these substances potentially harmful to the environment.



The same precautions should be taken when dismantling the machine.

The machine has been designed in accordance with good rules relating to the conservation of energy, avoiding waste and unnecessary losses. This means that the manufacturer has given due consideration to the rules in force in our country for energy efficiency.



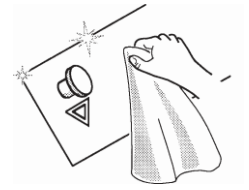
2.2.2 Safety devices and signage



It is absolutely forbidden to tamper with or remove covers and/or despotic safety, if not for extraordinary maintenance operations.

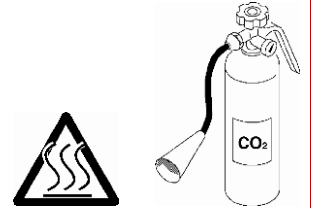
The manufacturer is not liable for damages caused to persons or property if the safety of the machine are excluded or tampered with.

All signs shall be kept clean and legible, the same is true of the instrumentation.



2.2.3 Thermal danger

The machine may have turned off due to overheating of the surface temperature (Ex: motors, transformers, lamps, coils, etc ...) so be careful where you touch and use the personal protective equipment available. In case of fire use foam self-priming and using plants to fight the fire in enclosed spaces.

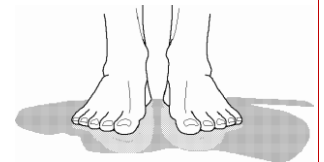


2.2.4 Staff clothing

Staff must not wear clothing with long sleeves, ties or belts that would preclude personal safety.



The staff must NOT access the machine or equipment barefoot or with wet hands.



Employees must wear the clothing and personal protective equipment provided by the employer: gloves, shoes, etc. ...

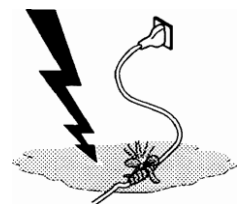
2.2.5 Maintenance requirements

The maintenance operations should only be carried at a standstill, while respecting the indicated frequencies and the general conditions of maintenance. The maintainer must in any case make sure that nobody else can restore or operate the machine during maintenance.



The removal of the protective devices is permitted only for maintenance by skilled personnel and the machine is stopped or at low speed; finished surgery, the manager must ensure that all the protective devices are put back.

CAUTION: Removing the shelters is only allowed after 5 minutes from the moment she took her tension.



The maintainers should report any malfunction or deterioration due to wear or aging, in order to promptly restore the proper safety conditions.

The cleaning of the machine must be carried out with adequate means and detergents that do not affect in any way the components of the machine it is absolutely forbidden to clean or wash the machine with water jets.



2.3 WORK ENVIRONMENT

2.3.1 Installation

The installation, removal and / or reinstallation in another place, as well as the extraordinary maintenance operations must be carried out only by trained personnel or by the manufacturer or behind your written authorization

2.3.2 Machine in motion

The moving machine is a potential hazard for which it is FORBIDDEN to do maintenance, open the casing otherwise; perform cleaning with the machine in operation.

Any foreign body instead of moving parts and is not part of the machine in this case, wrenches, screwdrivers, bolts, must be removed by before starting.

The operator should always pay attention to the work environment that surrounds it, in order to secure a living space large enough to allow escape routes.



2.3.3 Machine stopped or turned off

Also the machine is switched off can be a threat sleepers, cover, edges, etc... are inevitably dangerous, so we recommend caution in handling machine parts.

The Dietronic s.r.l. has eliminated sharp edges and sharp, but in some cases you can not fix it, so it is recommended to use suitable protective equipment (gloves made of leather).



DO NOT climb on the machine without the necessary precautions (platforms, stairs, etc ...).

2.3.4 Lighting of the work environment

The workplace must be properly illuminated to ensure safety to perform in all operations and maintenance work.

Lighting should avoid stroboscopic effects, dazzling, stress or shade.



2.3.5 Noise

The machine at full capacity, assessed individually and with a correct maintenance, generates a level of sound pressure (noise) of less than 80 dBA, then absolutely harmless to the operator.



If, for its varied and unpredictable installation possibilities, it exceeds the noise threshold permitted by the laws of the country in which the machine is intended, the Customer must take steps to remove the causes or protect workers with appropriate personal protective equipment (headphones), as well as a prior information to sensitize use and a periodic assessment of hearing.



3. CHARACTERISTICS

3.1 GENERAL CONDITIONS

The description of the characteristics of the machine allows you to identify the major components of the same, to refine the technical terminology used in the manual.

The technical terminology is collected in indices.

In this chapter you will find information on the composition machine, features, dimensions, and identification.

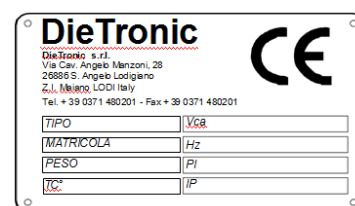
The adjustments, operation, and maintenance are described below transposed considering the information in this chapter.

3.1.1 Machine Identification and builder

The plates attached to the machine must NOT be completely removed, damaged, dirtied, hid, etc ...

The plates should be cleaned regularly and kept in view, that must NOT be hidden with objects and extraneous parts (rags, boxes, equipment, etc...).

The technical data given in this manual does not in any case replace those on the plates on the machine.



SERIES	MOTORIZED AIR BLOWER
MODEL	BLOWER
REGISTRATION NUMBER	2022815
YEAR OF COSTRUCTION	2022

3.1.2 Request for intervention and assistance

Dietronic s.r.l.

Via Madre Teresa di Calcutta, 9/13

26866 Sant'Angelo Lodigiano (LO) - Italia

Tel +39 0371 210129

Fax +39 0371 214321

e-mail info@dietronic.eu

www.dietronic.eu

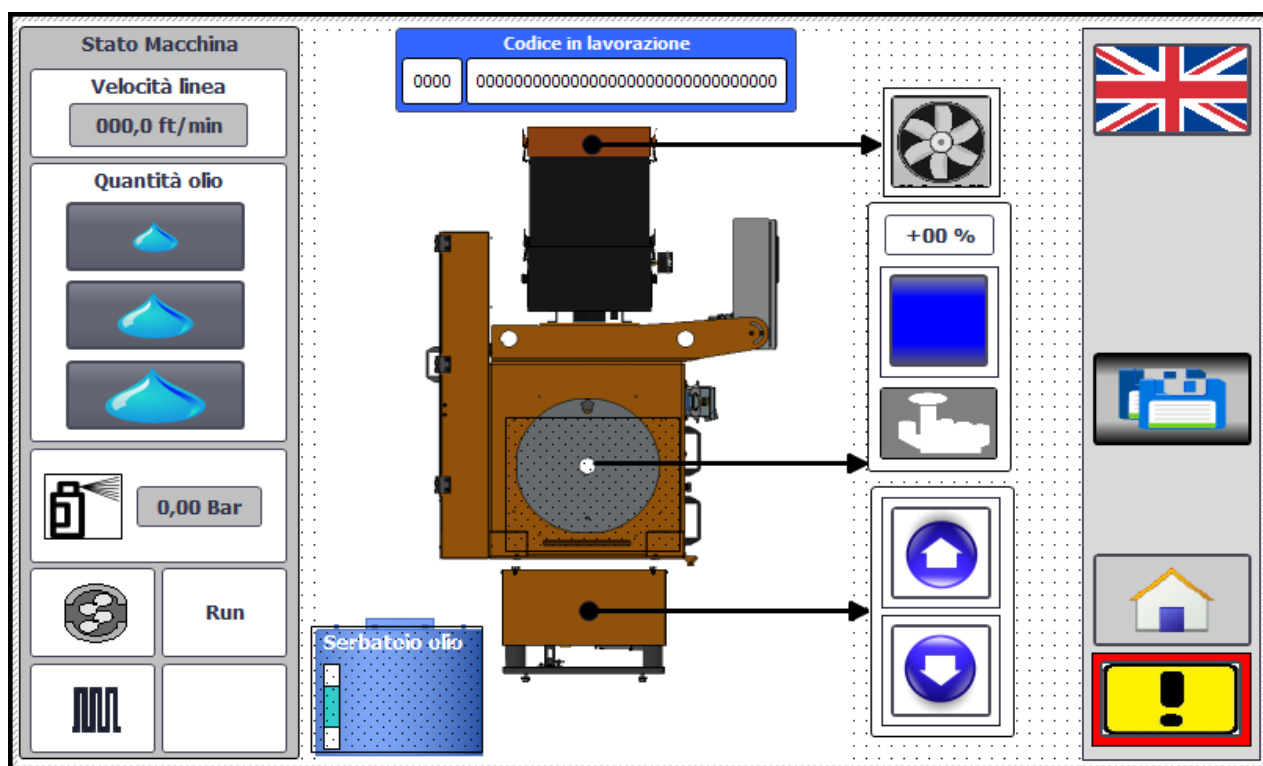
3.1.3 Safety requirements


- The terms used in this instruction to localize the different components of the machine, for example right, left, superior, inferior, and so on, always refer to the correct position of the operator during the normal course of work. (in front of the machine).
- Before starting up the machine, the operator has to read the following instructions and have acquired a deep knowledge of specific techniques and machine controls.
- It's recommended that the operator follows a period of training regarding the use of the machine.
- Before installing the machine, check that the area used is compatible with its overall dimensions.
- Do not allow unauthorized and qualified personnel to operate, adjust, or to conduct repairs. Refer also to this manual for appropriate action.
- Before cleaning and / or maintenance of the machine and before removing any protection, make sure the switch is OFF, so as to remove all electrical power to the machine during the intervention.
- The power system must be equipped with an automatic release system upstream of the overall machine and a suitable system grounding that meets all the requirements of industrial standards for the prevention of accidents.


- If you need to take action on the general breaker or in its vicinity, slacken the line to which the switch is connected.
- The movable parts (rollers and gate protection) of the machine does not stop immediately after shut down itself. It is recommended, before working on the machine, to make sure that all movable parts have stopped.
- All inspections and maintenance operations that require the removal of protective security are carried out under the full responsibility of the operator. It is therefore recommended to perform these operations by a qualified and authorized technician.
- Check that all safety devices security (fences, protections, guards, switches, etc.) have not been tampered with and that are fully functional before operating, otherwise arrange for their accommodation. Do not remove safety devices.
- Do not tamper with the electrical system, the tire or any other mechanism for any reason.
- Not getting groped or override the machine while is running.
- Do not wear rings, watches, jewelry, torn clothing or baggy such as ties, shoos, unbuttoned jackets or anything who can entangled in moving parts. Wear, however, approved clothing for accident prevention such as, for example, hard hats, sturdy shoes, gloves, ear muffs, safety glasses when necessary.
- Do not wear clothing with sleeves at work and particularly during cleaning operations
- In the case of repairs you have to ensure that there are:
 - No moving parts that can come into operation;
 - No unstable pieces located on the machine or in its vicinity;
 - In each case, fix them on the top with a suitable locking.
- Do not use your hands instead of adequate tools to operate the machine
- Don't use the hands or other objects to stop moving parts.
- Pay close attention to the labels on the machine every time you preparing to operate on the same or nearby.
- And 'you are obliged to keep all the tags readable by changing, if necessary, the position in order to ensure complete visibility to the operator.
- the user is also obliged to replace all the tags for whatever reason, have deteriorated or are not clearly visible, requiring new ones to parts service DIETRONIC SRL
- If not expressly specified herein, avoid to repair or adjust the machine or part of it when the same, or part thereof, is in operation, in order to avoid being pinched by moving parts.
- In the case of machine malfunctions or damage to the components please contact responsible for maintaining, without proceeding with further repairs.
- It is strictly forbidden to use the machine for purposes other than those provided and documented. The use of the machine must always be in the manner, times and places designated by the standards of good practice, the laws of every nation in the country although there were are no specific rules to regulate the specific industry.

DIETRONIC disclaims any liability for any accidents or damage to persons or property caused by failure to comply with the requirements for both safety standards listed below. These requirements, together with requirements for installation of the machine and the electrical connections are, moreover, an integral part of the Industrial Accident Prevention regulations of each country. These safety standards complement and not replace the safety rules in force locally. NEVER try to rush or emergency repairs that may affect the proper operation of the machine. IF IN DOUBT, ALWAYS ASK THE INTERVENTION OF A TRAINED. ANY ALTERATION BY THE MANUFACTURER RISE TO ANY LIABILITY 'AND MAKES THE' USER RESPONSIBLE TO THE SAME BODIES RESPONSIBLE FOR THE PREVENTION OF ACCIDENTS.

4. FUNCTION OF OPERATOR PANEL



in this page you can select and deselect the blower pushing this button . In this case the blower starts automatically with the start signal from the line.

You can also test in manual mode the blower pushing this button 

You can set the power of the air in this section

+00 %